

Getting to Know a HUBZone Certification

Government Services Exchange has more than 25 years of experience in Government Contracting and Compliance. Securing a HUBZone Certification with GSE will help your economically disadvantaged business gain access to Government Contracts and help you become more competitive.



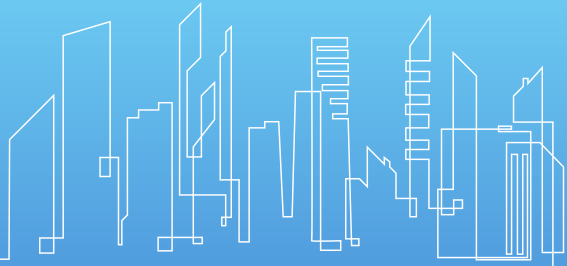
Historically Underutilized Business Zones are distressed rural and urban communities, which typically have low median household incomes. Additionally, the HUBZones will have a notoriously high unemployment rate.



**Government
Services Exchange**

Call 888-521-1170 | Email GSE@GovernmentServicesExchange.com

📍 4701 Sangamore Rd Suite 100N Bethesda, MD 20816-2558

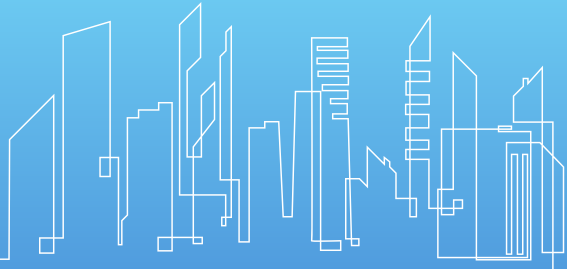


HUBZone Eligibility

To be considered **eligible for a HUBZone certification**, an organization must be a small business according to SBA standards. The eligibility requirements are as follows:

- Be at least 51 percent owned and controlled by U.S. citizens, a Community Development Corporation, an agricultural cooperative, a Native Hawaiian organization, or a Native American tribe.
- Have its principal office located within a HUBZone
- Have at least 35 percent of its employees live in a HUBZone
- To see if your business lies within a HUBZone area, check out [this map!](#)





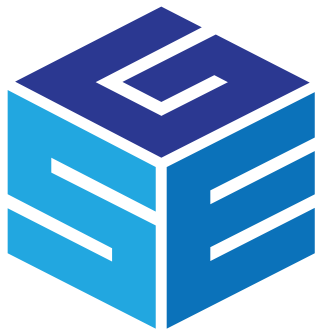
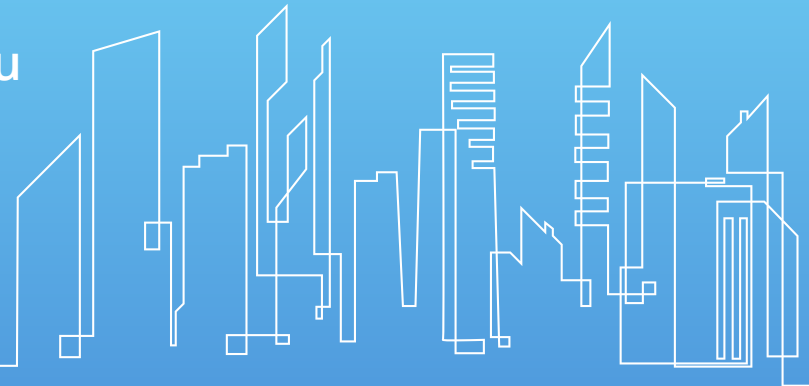
HUBZone Benefits

- Three percent of all federal contracting dollars are set-aside for Historically Underutilized Business Zones.
- 10% pricing advantage over its competition bidding on the same government contract.
- HUBZone firms are eligible to bid on set-aside contracts, which limits the scope of competition to only HUBZone certified firms.
- 3% of prime contracts are mandated to be subbed out to HUBZone certified businesses.
- The SBA has special programs set up for Bonding and Loans to assist HUBZone companies.



Get HUBZone Certified Today!

At GSE, we have the tools and experts to help you obtain a HUBZone Certification. Give us a call to get the process started.



Contact GSE

 888-521-1170

 GSE@GovernmentServicesExchange.com

